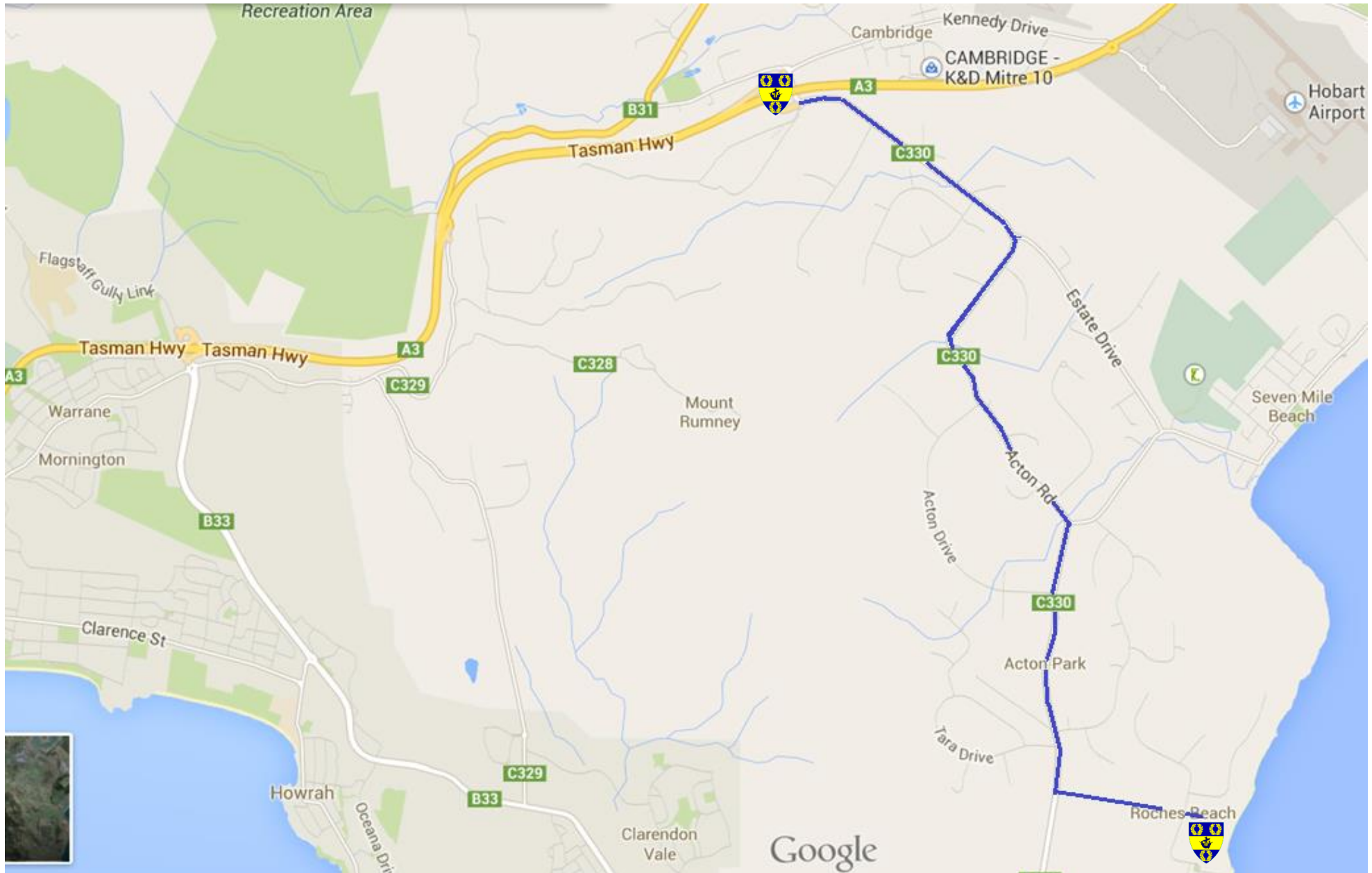
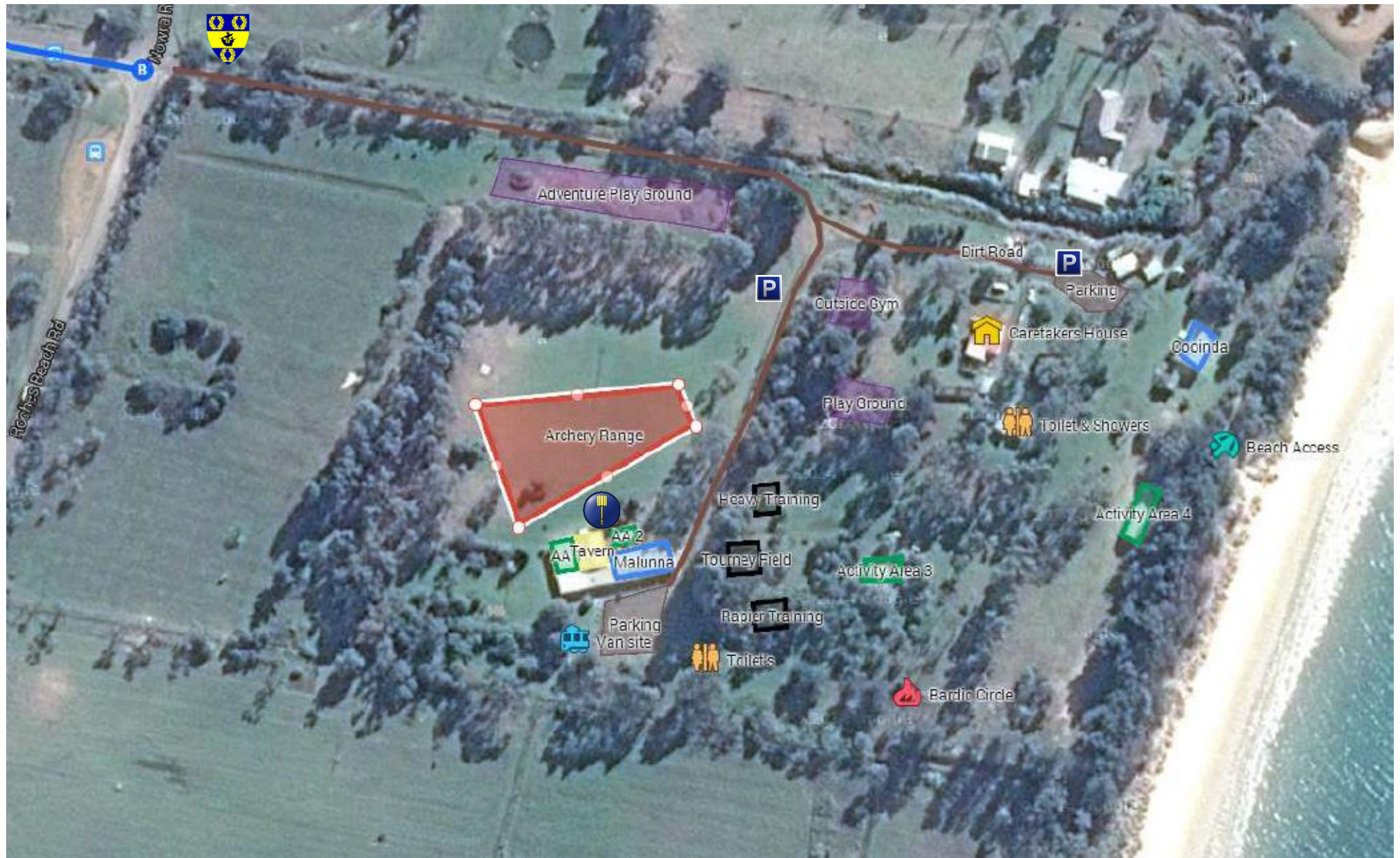


Great Southern Gathering 2017 – Getting There



Turn on to Acton Road, travel 7.4km then turn left onto Roches Beach Road at the T junction you will see a dirt driveway, follow this onto the site.

Great Southern Gathering 2017 – The Site



On arrival to the site please go directly to the Constable's table located in the Tavern to sign in & receive directions to your accommodation.

Orana Girl Guides Site

SOME HAZARDS

Risks

Fire	Low - Extreme	There are to be no open fires to be lit on site without the permission of the Steward. The Bardic Circle Fire must have two buckets of sand and two buckets of water close at hand at all times.
Wind	Moderate - Extreme	Be aware of trees and flying debris. Should there be high winds participants may be removed from the area. Campers may be moved to alternate accommodation arrangements.
Sun Exposure	Moderate	Tasmania is seen as a cool climate, but we can have harsh sun conditions. Sunstroke, heat exhaustion and dehydration. Slip, slop, slap, wear a hat and drink plenty fluids especially if you are a combatant.
Traffic	Low - High	On the Friday and Monday traffic maybe high on the site. Please drive at a walking pace while on the site and could all parents please watch their children.
Wildlife	High – Very High	We are in the Australian Bush, Insects, Jack Jumpers and Snakes are about at this time of the year. It is strongly suggested that appropriate footwear be worn at all times and please watch where you walk.
The Ground	High	Please be aware of rocks, sharp objects, animal burrows, small tree stumps and roots. Appropriate footwear must be worn at all times and please watch where you walk.
The Beach	High	There is free access to the beach; there is a high risk of drowning. Children must be supervised by their parents at all times within this area.
Challenge Valley	Low – High	Injury may occur from falls, damaged equipment of inappropriate use. It is advised that children are supervised in this area and any damaged equipment is reported to the Steward.
Outdoor Gym	Low – High	Injury may occur from falls, damaged equipment of inappropriate use. It is advised that children are supervised in this area and any damaged equipment is reported to the Steward.
Archery Field	Low - Moderate	A qualified Marshall must be present at all times, and their instructions must be followed at all times. Please be aware of any potential risks prior to shooting, if in doubt call HOLD . Blunts and a maximum of 30lb bows may only be used.
List Fields	Low - Moderate	A qualified Marshall must be present at all times, and their instructions must be followed at all times. Please be aware of any potential risks prior to combat, if in doubt call HOLD .